

TECHNICAL RIDER

SHOW INFORMATION

DESIRELINES is a 55-minute chamber ballet featuring animated projection for four (4) dancers, and three (3) musicians (violin, cello and clarinet).

<https://www.youtube.com/watch?v=GRr90clm7Lw>

STAGING

DESIRELINES can be staged for various types of venues but requires a minimum performance area of 11m wide and 9m deep covered in grey tarkett dance floor.

In a proscenium arch venue the production requires a full black mask (legs and borders) allowing for an entry point DSR and entries US both SL and SR. In a black box theatre minimum or no masking, whilst allowing for the entry points above, is preferred.

The touring set consists of aluminium “train track” structures with two trolleys that sit on top. These track pieces are moved around on stage by the dancers.

VISION

The vision design for **DESIRELINES** is projected onto the grey Tarkett floor covering an approximate area of 10m x 6m. Three projectors are used, displaying a resolution of 1920 x 1080 each. The three projectors are mapped together into one total displayed image of resolution 3200 x 1920. An edge blend of 20 pixels is used to join the 3 different projectors.

The three projectors should have a minimum of 4500 ANSI Lumen output. Please be aware that larger venues may require more powerful projectors. Appropriate lenses will be required to project the required area. Please contact Collusion to discuss specific venue size and rigging positions.

Collusion will tour an appropriate playback system. Please contact Collusion to discuss playback video interface connections for your choice of projector.

SOUND

DESIRELINES requires a PA system capable of high quality reproduction of highly dynamic music. Reproduction of both recorded music (via the projection playback system) and three musicians (Violin, Cello, Clarinet) via radio microphones appropriate to the instruments is required.

Collusion travels with a three (3) wireless radio microphones - Sennheiser XSW 12-B. It is the responsibility of the presenter to confirm that these are approved for use at your venue and if not supply an appropriate replacement system.

Equalization, Dynamics and Reverberation processing is required.

LIGHTING

Two versions of the lighting plan for **DESIRELINES** are attached. One version requires only a single moving head wash fixture. The other version requires six (6) overhead moving head wash fixtures, with a corresponding reduction in conventional fixtures.

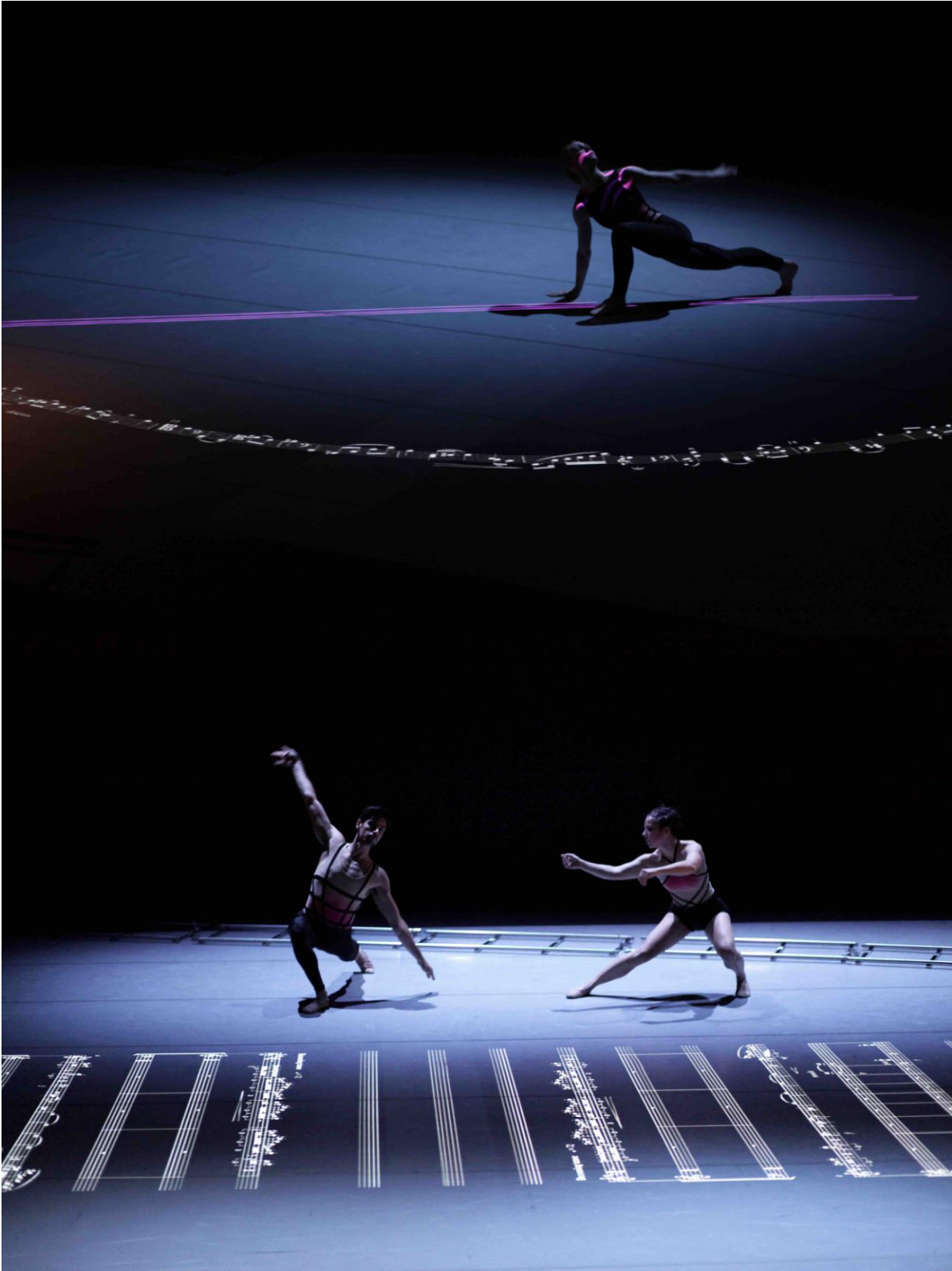
Venue equipment may be substituted as appropriate. All substitutions are at the discretion of Collusion.

The moving head wash fixture/s are ideally Martin MAC TW1, however alternative choices may be made if TW1 fixtures are not available.

A very light and gentle haze effect is required. MDG Atmosphere machine preferred.

DESIRELINES

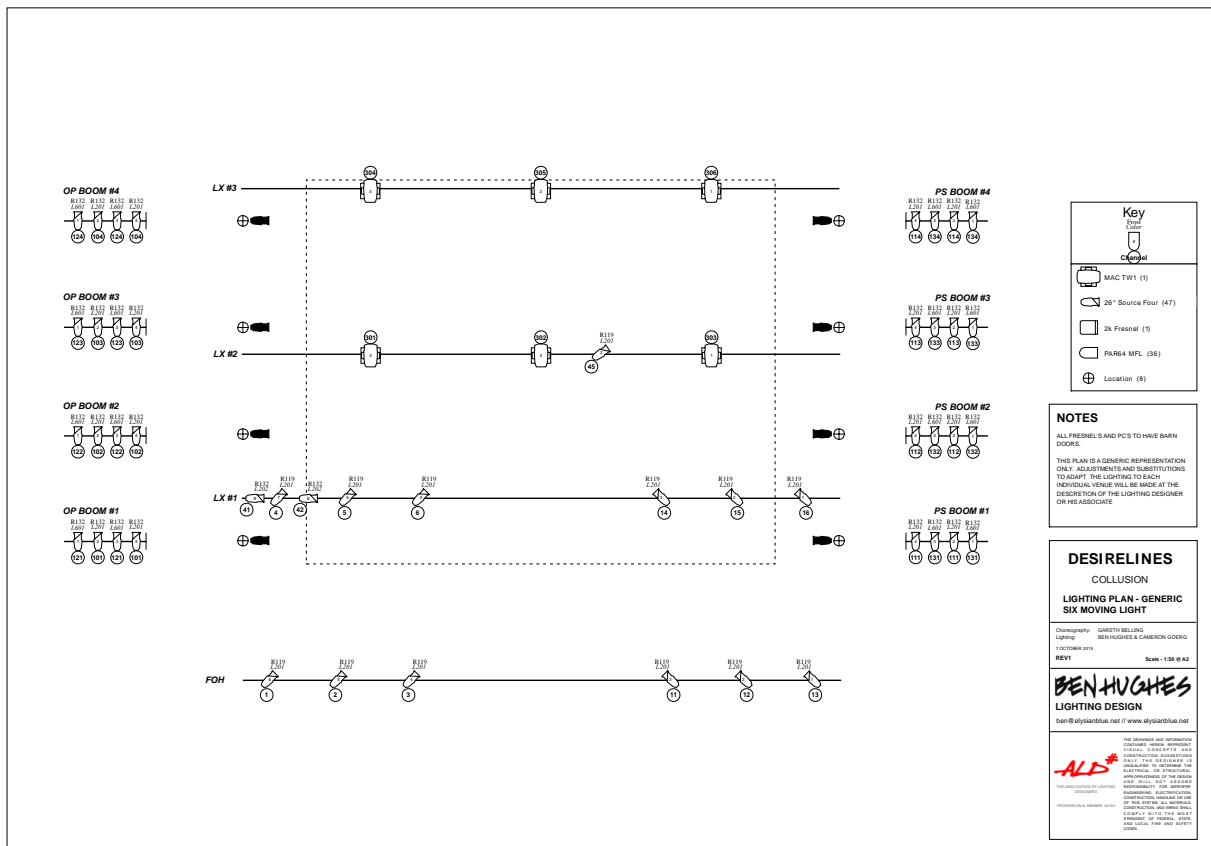
COLLUSION

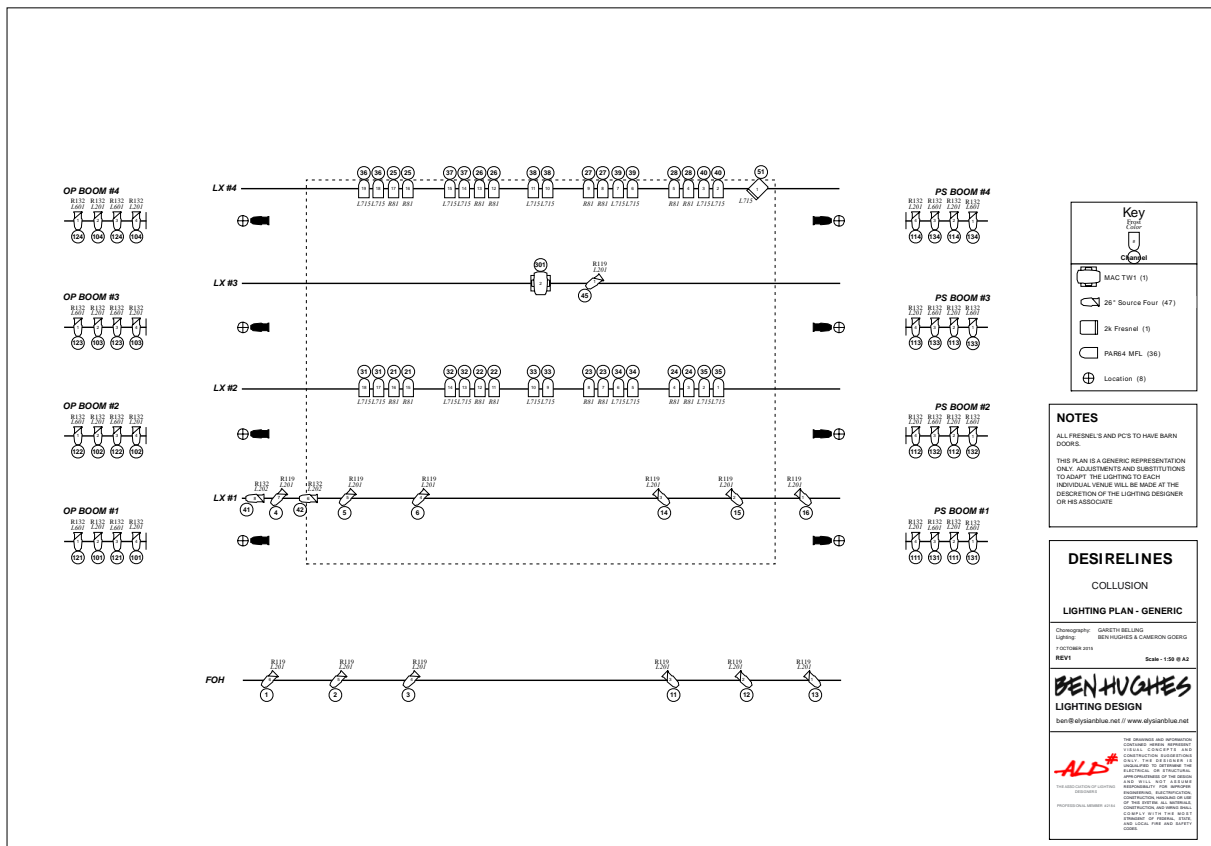




DESIRELINES
COLLUSION







Key

- MAC Twi1 (1)
- 25" Source Four (47)
- 2x Fresnel (1)
- PAR64 MFL (36)
- Location (8)

NOTES

ALL FRESNEL'S AND PCS TO HAVE BARN DOORS.

THIS PLAN IS A GENERIC REPRESENTATION ONLY. ADJUSTMENTS AND SUBSTITUTIONS TO ADAPT THE LIGHTING TO EACH INDIVIDUAL VENUE WILL BE MADE AT THE DISCRETION OF THE LIGHTING DESIGNER OR HIS ASSOCIATE.

DESIRELINES
COLLUSION

LIGHTING PLAN - GENERIC

Client: GARETH BELLING
Lighting: BEN HUGHES & CAMERON GOSKIN

PROJECT: [REDACTED]
REV1 Scale: 1:50 @ A2

BEN HUGHES
LIGHTING DESIGN

ben@elysianblue.net | www.elysianblue.net

ALD

THE DESIGNER AND ARCHITECTURE CONSULTANT HAS REVIEWED THE LIGHTING PLAN AND CONFIRMS THAT THE LIGHTING FIXTURES AND FIXTURES ARE APPROPRIATE TO THE VENUE AND THE LIGHTING DESIGNER HAS ADVISED THE ARCHITECTURE CONSULTANT OF ANY LIGHTING FIXTURES THAT MAY BE REQUIRED TO BE INSTALLED AT THE VENUE. THE ARCHITECTURE CONSULTANT HAS ADVISED THE LIGHTING DESIGNER OF ANY LIGHTING FIXTURES THAT MAY BE REQUIRED TO BE INSTALLED AT THE VENUE.